



44000_Patina Bowls_User Guide_V1



IMPRESSIONS
STONE EFFECT WATER FEATURES

Patina Bowls

User Instructions

Product code: 44000



Height: 900mm

Width: 700mm

Depth: 700mm

Power Pump Supply: 220-240V - 50Hz

Power Pump Rating: 16W

Pump Ingress Protection Rating: IPX8

INTRODUCTION

This product has been manufactured to the highest standards of performance and safety, assuring your complete peace of mind.

IN THE UNLIKELY EVENT THAT YOU NEED TO REPORT AN ISSUE CONTACT OUR HELPLINE DIRECT BEFORE RETURNING YOUR PRODUCT TO STORE.

PRODUCT SUPPORT | helpline: **01405 869333** | email: **productsupport@kelkay.co.uk**





SAFETY INFORMATION

- The water pump must always be connected through a portable residual-current device (RCD), or a built-in residual current circuit breaker (RCCB), having a rated residual operating current not exceeding 30mA. (This level of electrical protection was first incorporated into UK homes built after 2001.) If in doubt consult a certified electrician.
- The pump must always be operated in a minimum level of water (head) as marked on the pump after the letters 'Hmin'. Never operate the pump when it's not submersed in water as this could cause it to burn out.
- Always isolate the electrical supply to the pump before cleaning or making any adjustments to the flow rate.

DO NOT route the electrical cable:

- Across any walkways
- Across any grassed area that requires periodic cutting
- Over any areas where it could cause a trip hazard
- On, or across, rough or sharp surfaces that could sever or cause abrasions to the cable.

DO NOT:

- Allow children to play with the cable or touch the pump
- Drink from the reservoir or flowing water
- Cut the cable, to shorten, lengthen or join it, or to change the plug type: this is extremely dangerous and will invalidate the manufacturer's warranty
- Repair the pump's electrical cable the complete pump appliance must be replaced with one of identical characteristics.

DISPOSAL

This symbol means that waste electrical and electronic equipment (WEEE) should not be mixed with general household waste. For proper treatment, recovery and recycling, please take this product(s) to designated collection points where it will be accepted free of charge. Please contact your local authority for further details of your nearest designated collection point.





PARTS LIST

1. Fountain part (x5)



2. Water Pump (x1)



*Actual pump may differ from images shown

PLEASE FOLLOW THE STEPS BELOW BEFORE UNPACKING

- Unpack with care onto a smooth surface to avoid scratching
- Check for any parts that may be hidden within the packaging
- Refer to the assembly instructions to set up your fountain
- Retain your purchase receipt and attach it to this leaflet. In the event that a part needs to be replaced under warranty, it will require your proof of purchase.

REPLACEMENT PARTS

Pump code: SP1100

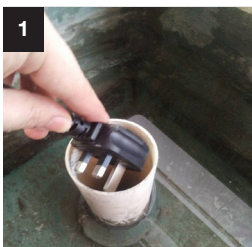
Replacement parts are available from Kelkay Ltd.

PRODUCT SUPPORT | helpline: **01405 869333** | email: productsupport@kelkay.co.uk

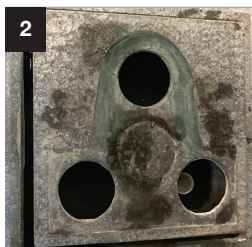




ASSEMBLY INSTRUCTIONS



Place the pump inside the basin and put the plug into the PVC pipe. Pull out the wire from the notch on the back.



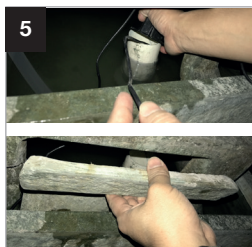
Place the base inside the basin then place the main body part on the base.



Attach the hose to the top bowl and run it into the top stand.



Attach the hose to the pump and tighten up.



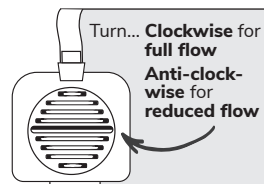
Cover the PVC pipe with the cord pipe cap through the pump access door. Then cover the door with the access panel. Next, carefully fill the fountain with water so that the pump is fully submerged (water must be at least 5cm above the pump).



If necessary, level the fountain by placing the shims provided underneath the fountain base. This should achieve an even water flow. Lastly, connect the plug from the transformer to your mains outlet.

PUMP FLOW

Always isolate the electrical mains supply before touching or adjusting the pump. The pump flow can be adjusted with the regulator, this is found on the inlet of the pump. We recommend starting with the flow regulator fully open and then adjusting down if required.





TROUBLE SHOOTING

WINTERCARE

- If possible, bring your water feature indoors for example in a garage or shed during the winter or periods of extreme weather conditions.
- Drain the fountain of all water. If water freezes within the fountain this can cause damage.
- Protective covers are available to purchase to cover the entire water feature, however we cannot guarantee that this will protect it from winter damage.

PUMPS

- Check the water is covering the pump by at least 5cm.
- Check the flow dial on the pump to ensure that an adequate flow rate is set.
- Clear the pipe and impeller of any blockages.
- Check the fuse in the plug.

LEAKS/LOSS OF WATER

- Overfilled - make sure the water reservoir is not overfilled. Remove water if necessary.
- Pump Flow Rate - check the pump and reduce the flow rate if required.
- Level - ensure the fountain is completely level.
- Natural evaporation, weather elements and wildlife will also affect the fountain water level on a daily basis. Top up your fountain as required.

MAIN BODY & PAINTWORK

- Do not confuse limescale residue with fading paint - this is not a fault and in most cases the fountain needs cleaning.
- Paint peeling will occur if the fountain has been left outside in the frost and will not be covered by the warranty.
- Parts broken off the main body while in use are usually caused by bad weather conditions and not covered by the warranty.



WARRENTY CONDITIONS

COVERED UNDER WARRANTY

- If it has a crack or leak and has been reported within 28 days from purchase it is under warranty and should be returned complete with electrics and accessories in the original packaging.
- If the paint on the fountain has peeled during normal use and the winter care procedure has been followed, it is under warranty.
- If the fountain has been delivered damaged it must be reported straight away for this to be covered by the warranty.
- If the proof of purchase shows the product was bought within 1 year, a free of charge replacement part can be supplied.
- Please be aware Kelkay will ask for proof of purchase. You will be required to provide the following information:
 - Your contact details - name, address, contact number, email.
 - Replacement part detail or part number required.

NOT COVERED UNDER WARRANTY

- Flickering lights caused by build-up of algae and limescale on the connectors
- Swelling or blistering on the casing of the pump.
- Pump smells of a burning residue.
- Discolouring that looks like rust.
- If the pump has a visible algae or limescale build up.
- Any damage to the plug or moulded inserts.
- Any damage caused by misuse or severe weather conditions.
- Cracks / leaks that have formed and not reported within 28 days from purchase.
- Paint and/or surface damage/ discolouration due to limescale or frost damage.

If any of the conditions above are found, it is likely that this is due to incorrect maintenance and the warranty will be void. Do not dispose of any components as further inspection by Kelkay Ltd may be requested.

If proof of purchase is not available or the product is out of the warranty period, a replacement parts can be purchased from Kelkay Ltd.





MAINTENANCE & CARE

CLEANING YOUR FOUNTAIN

- Clean and top-up the water on a regular basis.
- To empty the fountain of water for cleaning or for winter care:
 - Smaller fountains (that are light enough to be lifted) - water can be emptied by simply inverting the fountain and letting the water pour away through a suitable drain or sink.
 - Larger (heavier) fountains - water can be removed by using a large sponge or by purchasing a simple syphon pipe available from aquatic supply stores.
- Always isolate the power before cleaning the fountain or pump.

AFTER CARE

To get the best out of your fountain we recommend the following products

	Fountain Algae Stopper 385g 4597 <ul style="list-style-type: none">• Easy to use• Removes and prevents algae and bacteria• Will not harm animals and birds		Fountain Citronella Water Scent 125ml 4594 <ul style="list-style-type: none">• Easy to use• Clean and fresh scent• Helps to repel insects
	Fountain Grime and Lime Cleaner 500ml 4595 <ul style="list-style-type: none">• Easy to use• Removes dirt from your water feature• Limescale buster		Fountain Shine Spray 500ml 4592 <ul style="list-style-type: none">• Easy to use• Helps preserve radiance• Leaves a smear free shine
	Fountain One Shot Algae Remover 100g 4596 <ul style="list-style-type: none">• Easy to use• Removes algae and bacteria• Stops slime build up	Please note: the easyfountain® aftercare range is only available in the UK and Republic of Ireland. Please check with your nearest stockist for availability.	





PROOF OF PURCHASE

YOUR DETAILS

Name:

Address:

Tel:

Email:

Date of purchase:

Purchased from:

ATTACH PROOF OF PURCHASE HERE

PRODUCT SUPPORT | helpline: **01405 869333** | email: **productsupport@kelkay.co.uk**

